

Data Sheet

BRAIN2 Device_Access

BIZERBA

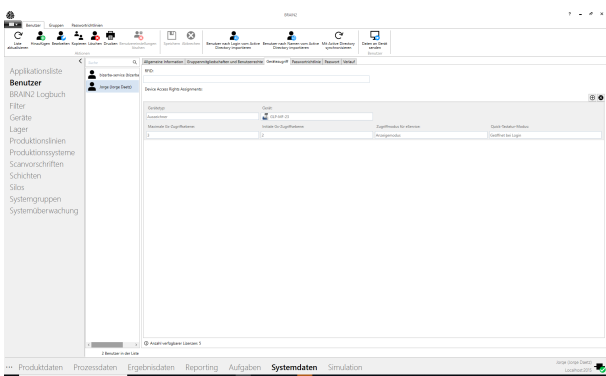
BRAIN2 Device_Access allows you to centrally manage all users of your production systems. As BRAIN2 administrator you define the various access levels for operators and production staff. Your benefit: efficient user management for controlled processes. Ideal to avoid costly production downtimes caused by unauthorized access to your devices.



More information
High performance
with a wide range of
solutions and options.

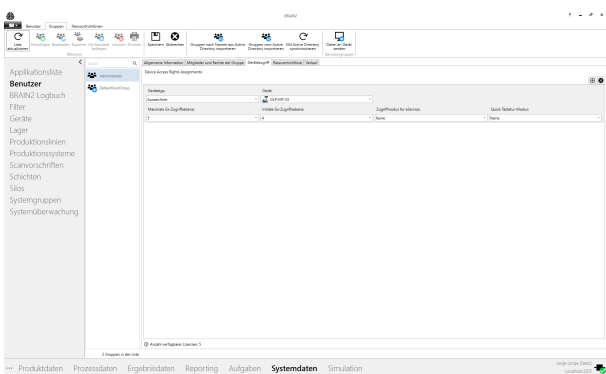
Product description

The BRAIN2 Device_Access app allows you to individually license any managed device. Define an access profile assigning an access level to each single user based on the activities in the production line. Inform the maintenance staff on the highest access levels. Prevent unwanted changes by restricting the user's interaction with the device.



Functional features

- Central user or user group management for display and operating units
- Various initial access levels: 1 to 5 or 9 for service
- Various maximum access levels: 1 to 5
- Configurable eService mode
- Configurable quick keyboard mode



Provable benefit

- Time savings due to a simple and efficient, centralized user rights management
- No costly production failures resulting from unauthorized access to device
- Task-oriented device access: critical settings can only be changed by qualified staff
- Additional security level for devices and users thanks to the BRAIN2 integrated rights management

BRAIN2 - optimized processes

- The dynamic design of BRAIN2 and the freely selectable applications allow you to clearly arrange and individually design the user interface. As a result you benefit from a more efficient and easier operation

-
- With the available Bizerba modules you dimension and adapt BRAIN2 Framework to fit your production. Misinvestments due to partially unused software packages are avoided.
 - To save time for repetitive tasks, you can automate tasks with BRAIN2 such as reporting on the printer, backup of the BRAIN2 database and reporting via e-mail.
-

Bizerba SE & Co. KG

Wilhelm-Kraut-Straße 65
72336 Balingen

T +49 7433 12-0
fax: +49 7433 12-2696
marketing@bizerba.com

www.bizerba.com